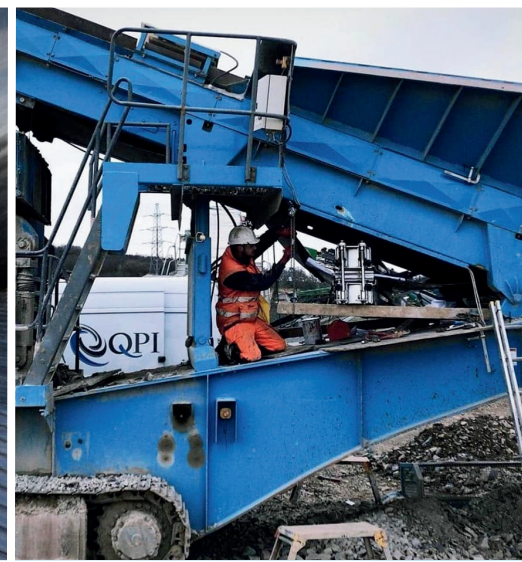
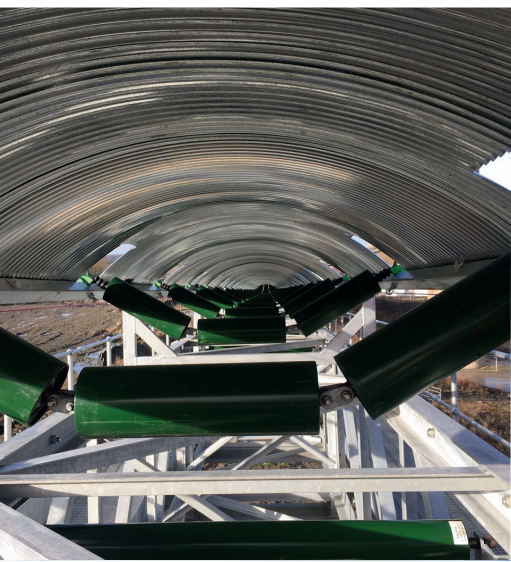




Products and Services



CONTENTS

About us	1
Services	2
Vulcanising	3
Fitting & Fabrication	4
Conveyors	5-6
Conveyor Belt	7-9
PVC & Solid Woven Belt	10
Conveyor Rollers	11-12
Uni Rollers	13
Return Roller Cradles	14
Transoms & Frames	15-16
Drums	17
Drum Lagging	18
Pit Stop Pulley	19-20
Flexco Products	21-22
Rubber	23
Chute Lining	24
Impact Bed	25
Other Products	26
Contact Information	27

ABOUT US

Quarry Plant & Industry Ltd is a leading supplier of conveyor belting, rollers and conveyor products based in the UK.

With our headquarters in Leicestershire, QPI is within easy reach of almost any destination in the UK. Established in 1995, we have invested many years sourcing the right products, all of which exceed British Standards and are competitively priced. We have seen sales continue to grow over the years which we believe is due to the commitment to our customers who deserve the highest quality products and superior customer service.



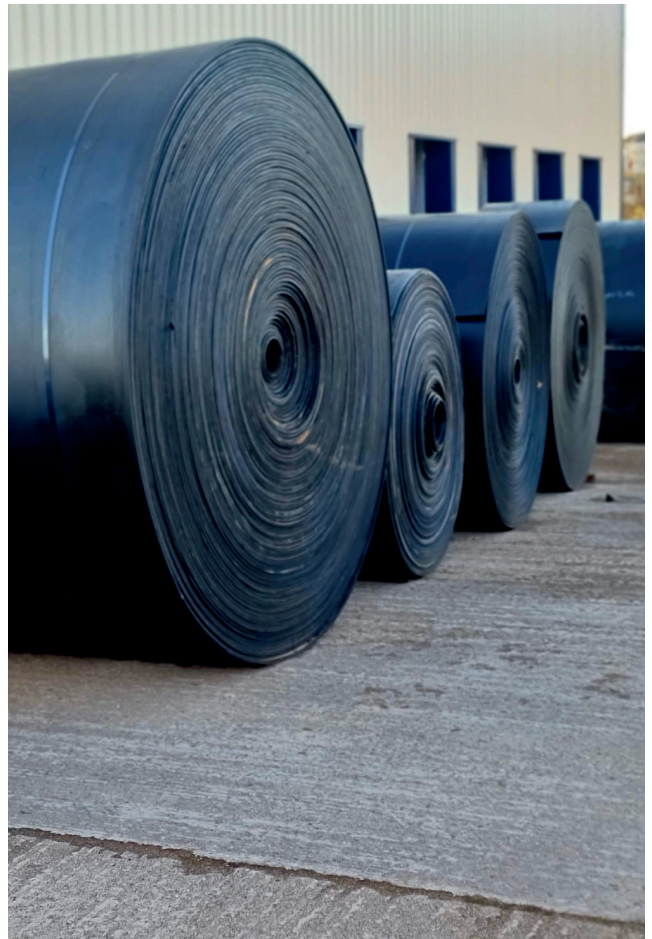
We supply from our extensive stocks, a substantial selection of conveyor belts, conveyor rollers, drums, lagging, chute lining, skirting, steel backed rubber tiles, rubber products and compensators.



To complement our products, we have a large number of in-house vulcanising teams and fitter fabricators who are amongst the most experienced in their trade so our customers can be guaranteed a service which is second to none.



It is the combination of a collective 100 years of experience in this industry, innovative design, and a substantial stock holding that has enabled us to successfully supply quality products accompanied by superior services to our customers old and new.



SERVICES

QPI offer a range of site services that include:

- Full or part time maintenance contracts
- Conveyor installations
- Conveyor relocation
- Belt winding and slitting
- Full fabrication and fitting services
- Customer site surveys
- 24-hour site service
- 7 days a week availability



VULCANISING

With one of the largest and highly experienced vulcanising teams in the UK, QPI proudly offer nationwide coverage for pre-planned work, operating 24 hours a day, 7 days a week. Additionally, we provide a limited out-of-hours call-out service for urgent requirements.

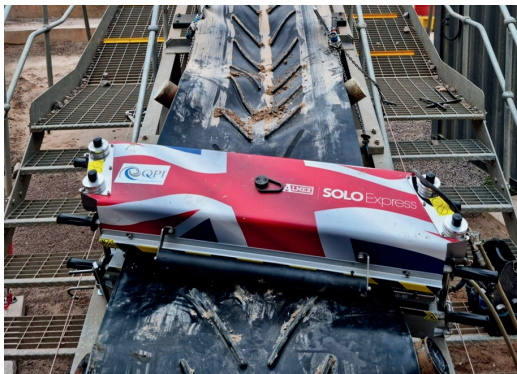


Our service team is comprised of extensively trained professionals skilled in both hot and cold vulcanising techniques. Many of our team members have progressed from trainees, to vulcanising engineers, to experienced senior vulcanising engineers, ensuring a depth of expertise within our ranks.

Our service teams can perform splices on any of the following belt types:

- Plyed belt
- Chevron
- Rip check
- Heat resistant
- Cross stabilised
- Tube belt
- Friction back
- Grip face
- Steel cord
- Plasterboard
- Solid woven
- PVC belt

We offer hot and cold jointing of belts up to 3,000mm wide. Each vulcanised joint is branded after completion with a specific reference number which can then be used to identify the specific job information if needed in the future. Our skilled personnel also perform vulcanised, patch, and edge repairs to ensure long-lasting and optimal conveyor belt performance.



FITTING & FABRICATION



Alongside our vulcanising services, QPI offer precision fitting and fabrication services, executed by our team. Comprising of skilled and experienced professionals, our fitting team is dedicated to understanding your specific needs and ensuring that our solutions align perfectly with your objectives. We work collaboratively, offering tailored fitting and fabrication solutions alongside our in-house draughtsman that elevate the efficiency and reliability of your operations.

CASE STUDY - CLAY PICKER

QPI were recently commissioned to manufacture and install a new clay picker to remove clay and oversized material on a customers field conveyor. To facilitate this the belt passes over a flat low friction polyethylene bed to allow the oversized product to be removed by the rotating picker above and ejected via a side chute. The unit shown in the images below has been designed to be free standing and incorporated into the customers existing standard 900mm field conveyor. Bespoke solutions are available for all conveyor types and are supplied, installed and fully guarded to customers specific requirements.



CONVEYORS

QPI is capable of supplying anything from a single idler to a complete field conveyor. Our expertise extends to providing and installing field conveyors with single or double drum drive heads.



A growing area of our business is the relocation of field conveyors. A complete relocation package is readily available including:

- Belt winding
- Dismantling and relocation
- Reassembly
- Fitting and vulcanising



CONVEYORS



CONVEYOR COVERS

Conveyors can be covered for environmental or production reasons. We can supply and fit covers to your specification for any conveyor. (As shown on the example above)



FIELD CONVEYOR SYSTEMS/ GROUND CONVEYORS

QPI specialises in providing robust overland ground conveyor structure systems. Our track record includes the successful supply and installation of over 50,000 meters of overland ground conveyors at numerous quarries throughout the UK.

These conveyors have consistently operated with efficiency and reliability, meeting the demands of various industries, whilst offering a modular and lightweight conveyor system.

Our readily available field conveyor structure is stocked in widths of 600mm, 750mm, and 900mm. For any other width requirements, please don't hesitate to reach out to us. Our team is ready to assist you in finding the perfect solution for your specific needs.

CONVEYOR BELT

Conveyors are the arteries of the materials handling industries, and the potential costs incurred from “downtime” are substantial. QPI’s Enduroply™ brand represents our quality assured conveyor belting.



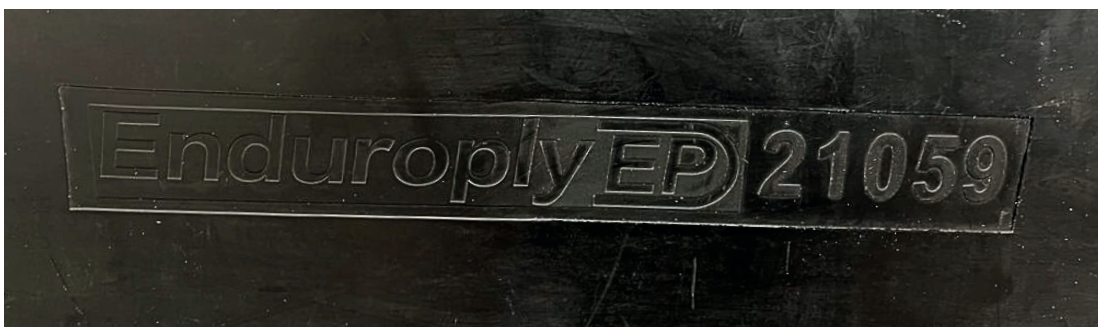
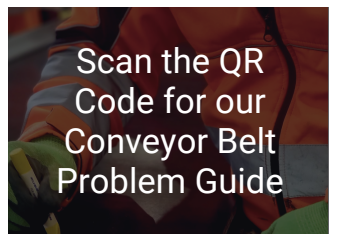
Enduroply™ is manufactured to quality standards of DIN 22102. To ensure consistency of standards, our engineers regularly visit manufacturing facilities to inspect the production lines. Enduroply™ is constructed using low stretch fabrics and available in stock width up to 3000mm. Each roll of belt has its own unique reference number for full traceability.

If it's branded Enduroply™, we have put our name to it!

QPI holds the largest stock holding of rubber conveyor belting of any supplier in the UK, with belt stocks constantly in excess of 100,000 m held centrally at our Heather Works in Leicestershire and is available for immediate dispatch allowing unprecedented nationwide response.

Enduroply™ conveyor belting can be made to order for specific customer requirements.

Please contact us for the latest stock and pricing information

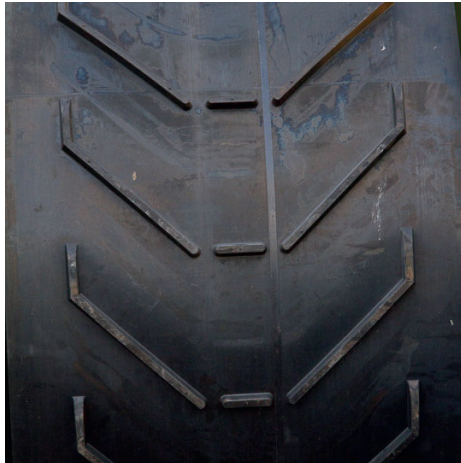


CHEVRON BELT

This type of belt is specifically made for steeply inclined conveyors or conveying of round material to prevent roll back. We have various pattern styles available some of which are shown below:



BELT TYPE: C15 CHEVRON



BELT TYPE: C25 CHEVRON



BELT TYPE: MULTI V

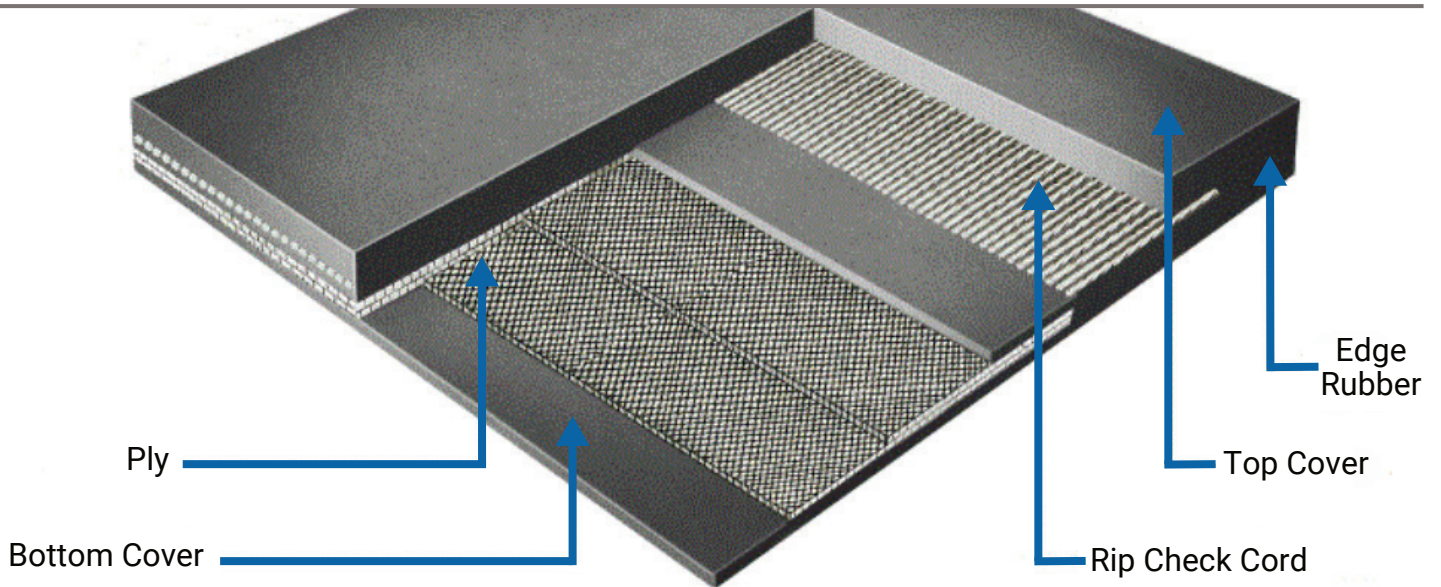


Please contact us for the latest stock and pricing information.

SPECIAL BELTS

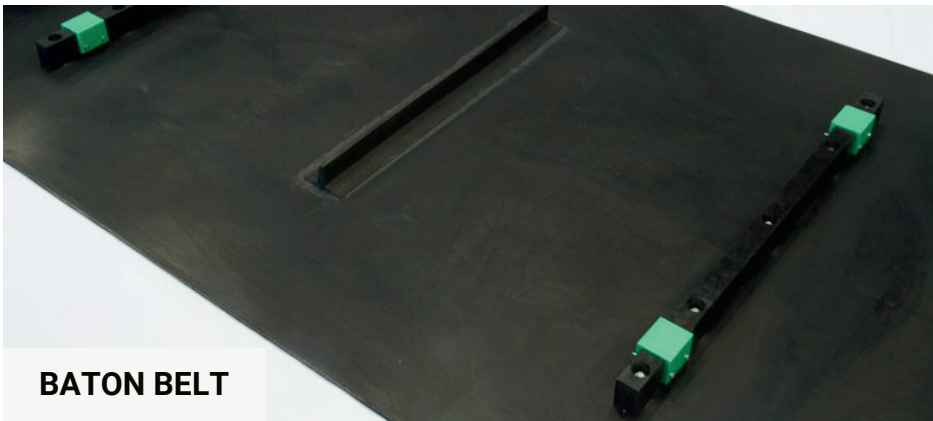
At QPI, we have extensive experience in the correct selection of the type of belt best suited for your requirements. We offer various types of conveyor belts including special types such as; Cleated, Elevator Belt, Power Bend, Side Wall, Gripface, Friction Back and PVC Belt.

Please contact us for the latest stock and pricing information.



RIP STOP BELT

Rip-stop belting has close pitch steel breakers across the belt to help prevent long cuts and slits, for more arduous conditions where cutting is a problem. For example, sharp stone and concrete re-bar. In heavy impact applications the steel breaker will protect the carcass of the belt extending the life.



BATON BELT



SIDE WALL BELT

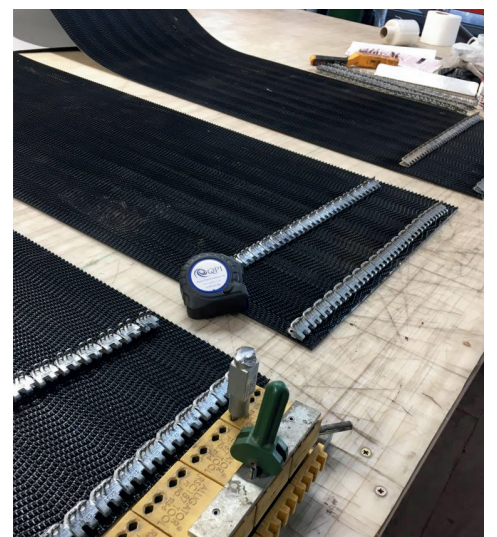


CHAIN-DRIVEN SLATTED BELT

PVC & SOLID WOVEN BELT



QPI offers PVC and solid woven conveyor belt to be supplied and/or fitted by our experienced PVC specialist team. These belts are used in a range of varied industries including: *Recycling, Brick & Tile Manufacturing, Bagging & Palletising Plants, Airport Luggage, Parcel Transport, Theme Parks, Farming, Vegetable Production and the Food Industry.* These are available in stock up to 3000mm wide.



CONVEYOR ROLLERS

QPI design and supply conveyor rollers to any specification. Massive stocks of conveyor rollers, in various diameters and lengths, are available off the shelf including: Standard Idlers, Spiral and Rubber Disc Returns, Rubber Impact Idlers, Suspended Sets for Field Conveyors and Uni Roll – QPI’s exclusive roller solution.



Some of our rollers can be seen above:

1. Return Rollers
2. Vari-Trough Sprung
3. Varied Roller Ends
4. Stub Idlers

Please contact us for the latest stock and pricing information.





CONVEYOR ROLLERS

Our esteemed manufacturing partners are renowned for producing the highest-quality engineered products that have gained global recognition among engineers. As a world-class provider, QPI take immense pride in this acknowledgement. The expertise lies in manufacturing conveyor rollers to precise dimensions, adhering to international quality standards.

SHELLS

All tube is specially selected for uniform concentricity allowing minimum TIR (Total indicated runout). All steel rollers are counter-bored weld, thus protecting the belt from end plate separation, in 3.6mm to 12mm thick.

BEARINGS & SEALS

Our seals have a unique 5 seal system, well above any industry standard. Through Shafts and bearings are manufactured with the following options 20mm, 25mm, 30mm, 35mm, 40mm or 50mm. Ends of rollers can be manufactured to suit any existing frames.





UNI ROLLERS

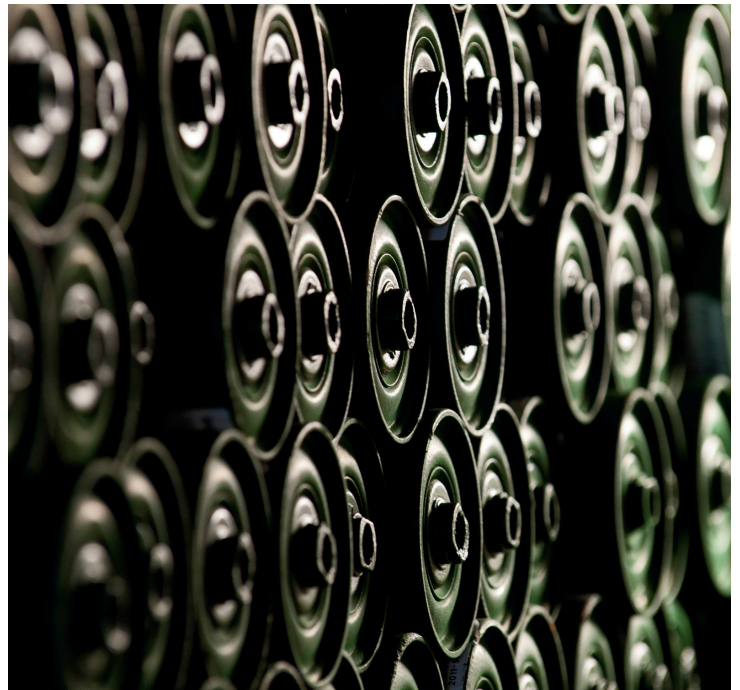
After 25 years of experience in the design and supply of idlers and rollers, Uni Rollers offer a revolutionary solution to bespoke roller needs unique to QPI in the UK.

Our system has enabled us to supply a vast range of rollers direct from stock. The system briefly comprises of a base roller with the ability to fit a huge variety of terminal ends to suit almost any application.

The combination of an innovative design and a substantial stock holding has enabled us to provide the majority directly from stock.

This allows us to supply both day to day roller requirements and any required on breakdowns.

Please contact us for the latest stock and pricing information.



Scan the QR code to
download our Roller
Request Form

RETURN ROLLER CRADLES

QPI's Return Roller Lifting Cradles are an intuitive design which reduces manual handling injuries, alleviates the need to lift the belt off the return roller and minimises the risk of return rollers falling from the conveyor.

Ex-stock availability in almost any standard belt width.

Additional Information:

- Supplied complete with a standard 4" ISO specification roller (spares available nationally)
- Can accommodate up to 168mm (6 5/8") diameter rollers.
- Ideal for conveyors with single walkway.
- Reduces the need for cherry picker for fitting replacement rollers.
- Only requires an "adjustable spanner" for complete operation.
- Fully galvanised.



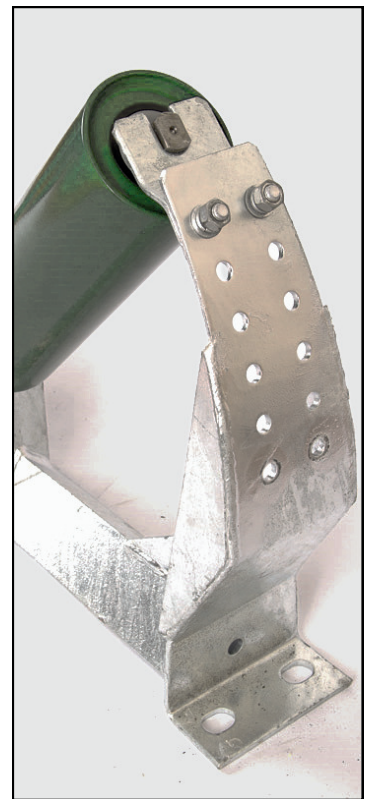


TRANSOMS & FRAMES

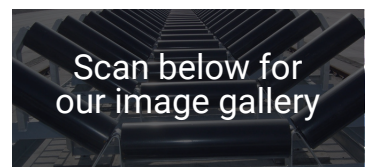
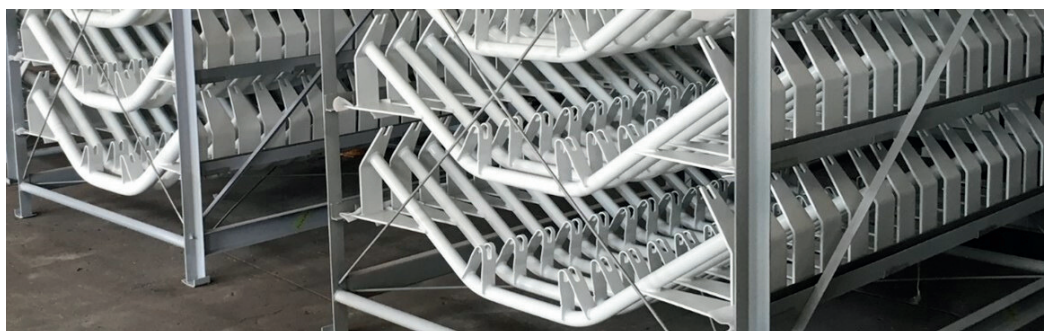
Our frames are meticulously crafted with precision using laser-aligned jigs and are robotically welded to ensure consistent accuracy throughout the assembly process. This approach guarantees the highest levels of quality and reliability in our frame construction.

Key features of our frames include:

- Angular or tubular self-cleaning cross members, designed to facilitate effective material flow and prevent build-up.
- Available in both staggered and in-line configurations, providing flexibility to meet different layout requirements.
- Complete with slotted tracking fixings, enabling easy adjustment and alignment of the conveyor system.
- Manufactured to comply with international standards, ensuring compatibility and adherence to industry regulations.



Please contact us for the latest stock and pricing information



TRANSOMS & FRAMES



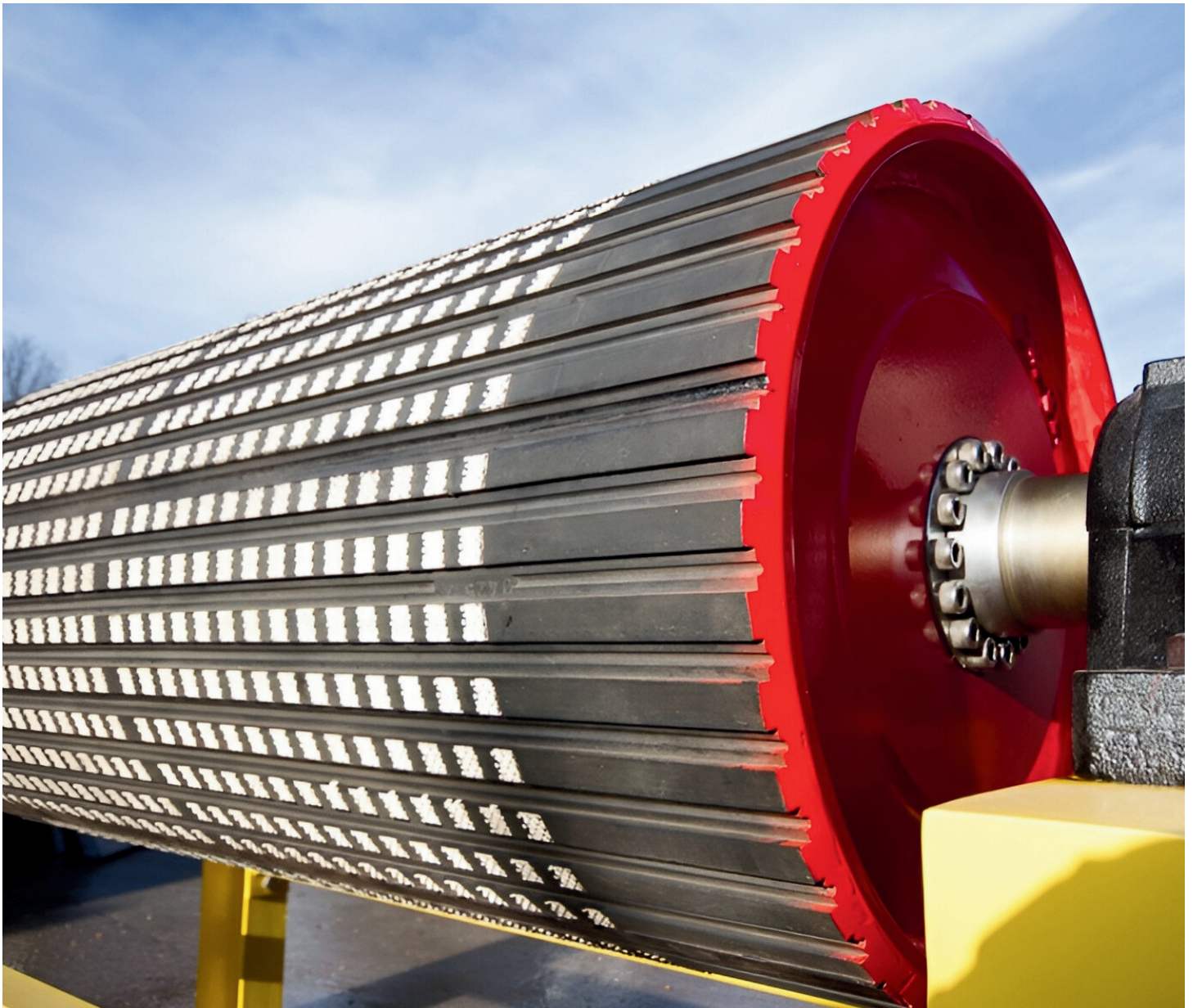
VARI-ANGLE TRANSOM



JACK DOWN IMPACT SET

TRANSITION SET





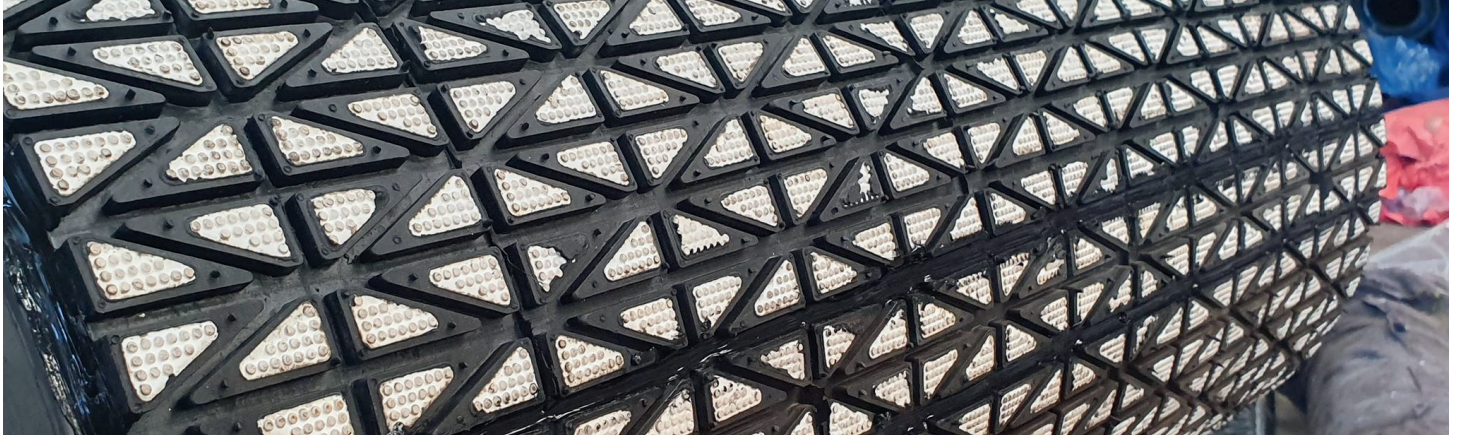
DRUMS

QPI offer a comprehensive range of conveyor drums to meet customer specifications or our own highly engineered standards.

Our assembled conveyor drums undergo a “top turning” process to ensure the face runs true to the shaft, guaranteeing optimal performance and bearing life.

Our preferred shaft fixing for standard drums is the “Ring locked” method. This choice eliminates the weld fatigue issues often associated with bossed and welded configurations. Additionally, this method allows for the possibility of changing the shaft without replacing the entire drum, offering greater flexibility and cost-effectiveness.

DRUM LAGGING



Drive Drums are lagged to provide traction to eliminate belt slip.

Drum Lagging is available in several options:

- Plain rubber 60 shore – for extra wear protection on tail drums & clean side snubs
- Plain 40 shore – for anti cake on dirty side snubs to reduce material build up
- Diamond pattern rubber – will be sufficient for most applications
- Slide / Weld on steel & rubber strips – where space is limited and face of the drum is pitted and worn.
- Ceramic – where extra traction is required



DIAMOND LAGGING



SLIDE LAGGING



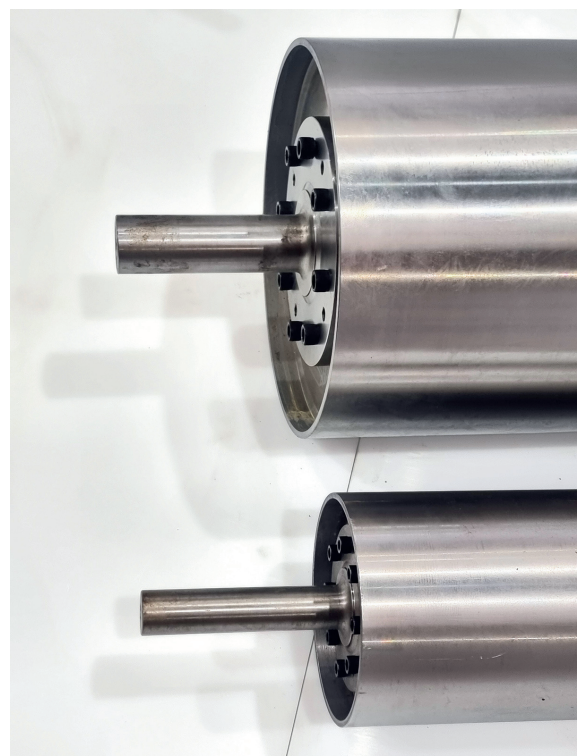
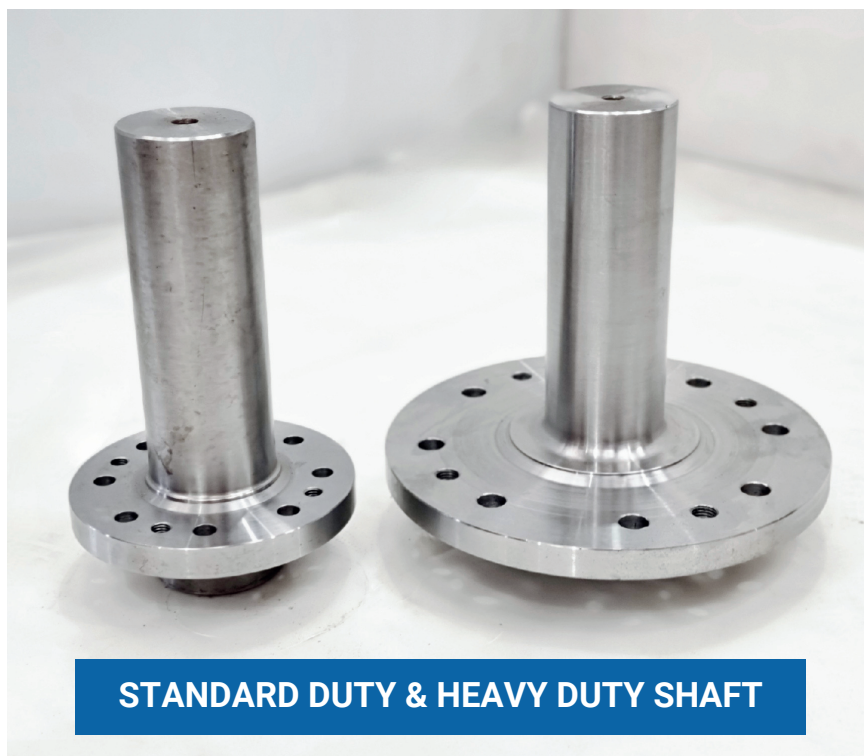
CERAMIC LAGGING



SLIDE LAGGING FITTED ON SITE

PIT STOP PULLEY

Introducing our latest product, the Pit Stop Drum/Pulley. This innovative modular drum system allows for quick assembly of tail, snub, and drive configurations. Available in Standard and Heavy duty.



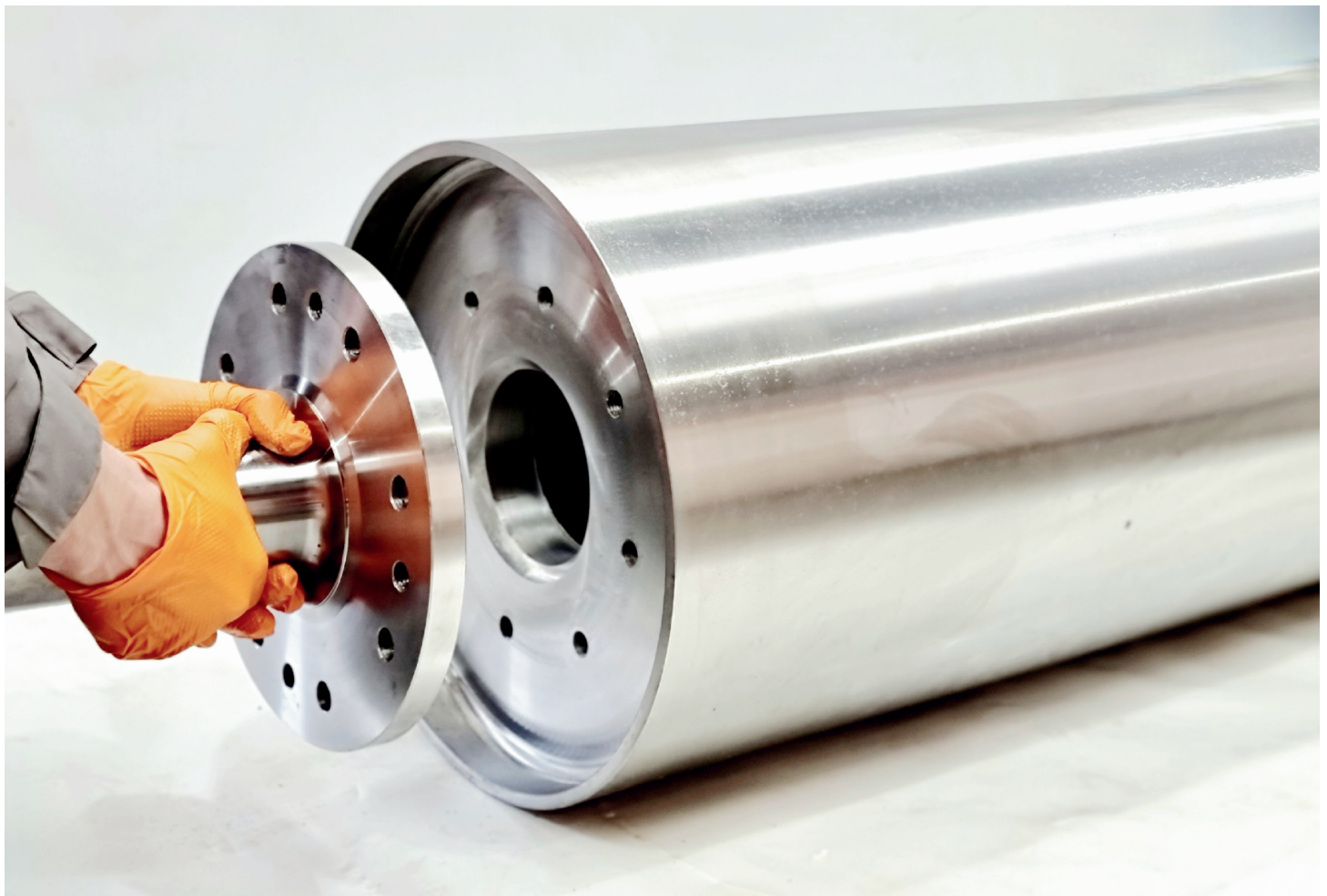
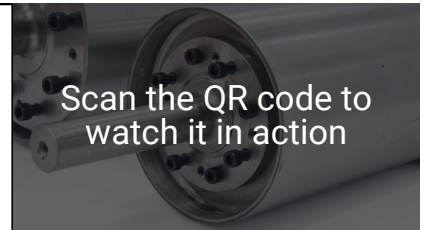
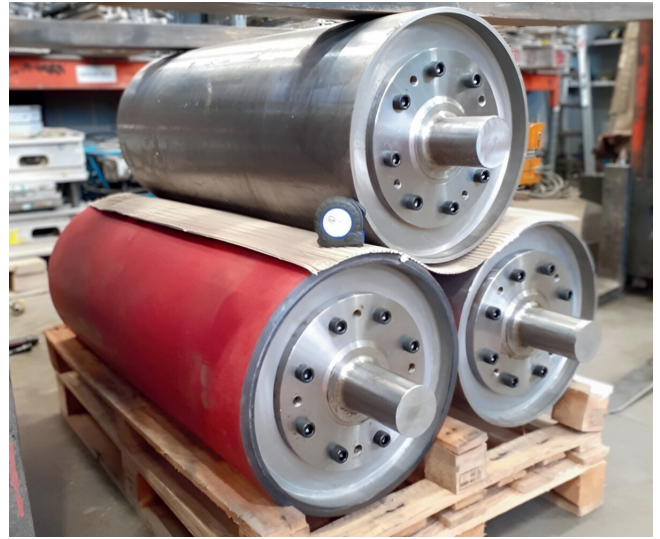
PIT STOP PULLEY

One of the key advantages of this system is the availability of 'off the shelf' shaft ends. In the event of a bearing failure, these shaft ends can be easily dispatched, minimising downtime.

Alternatively, sites can keep them in stock to ensure quick replacement when time is of the essence.

The Pit Stop Drum/Pulley provides a reliable and efficient solution, allowing for rapid configuration changes and swift response to maintenance needs.

Please contact us for the latest stock and pricing information.





FLEXCO PRODUCTS

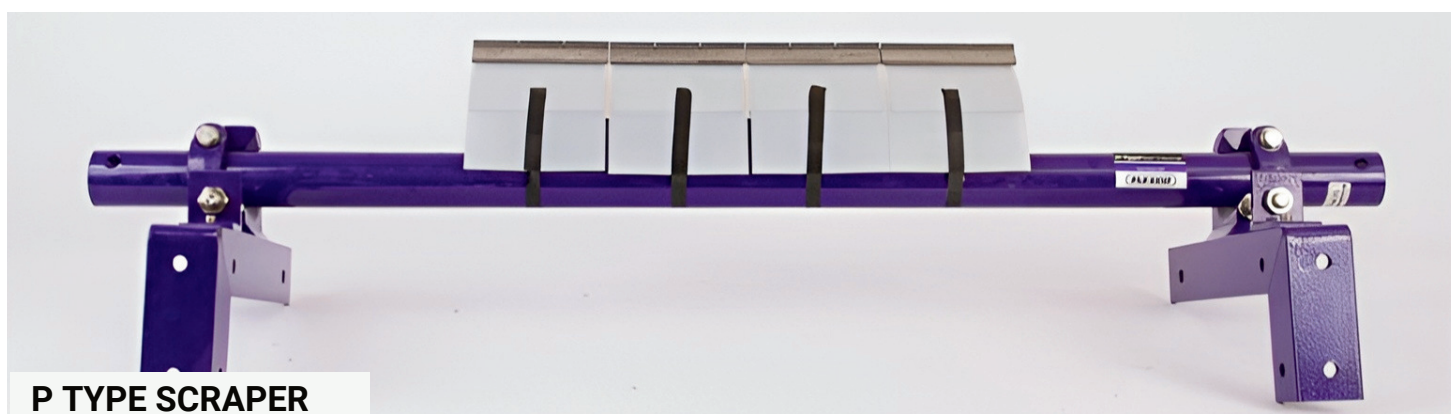
CONVEYOR BELT SCRAPERS

QPI are an official Flexco distributor and one of the largest stockists in the UK. We offer a full range of belt cleaners which can be supplied and fitted to suit all applications.

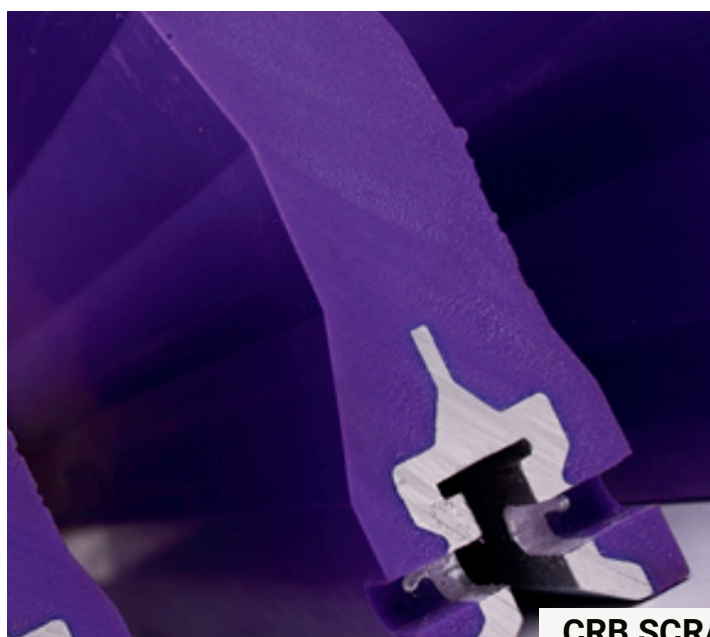
The benefits of using a belt cleaner:

- Easy to fit.
- Reduce material carry back, costs and hazardous working conditions.
- A decrease in material carry back will dramatically reduce the expensive labour costs involved in the cleaning of often inaccessible areas.
- Using a cleaner cuts down unscheduled production stops occurring when dealing with these costly problems.

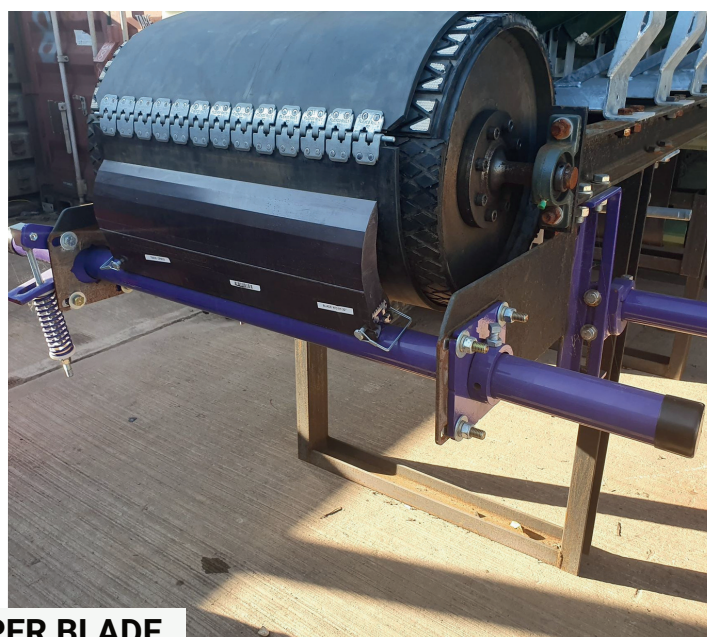
For a full extensive range of Flexco products and information sheets, please scan the QR Code above or contact us for the latest stock and pricing information.



P TYPE SCRAPER



CRB SCRAPER BLADE





FLEXCO PRODUCTS

BELT FASTENERS & CLIPS

Alongside the supply of belt cleaners, our extensive range of belt fasteners and clips cover belts from 2 mm to 25 mm thick. We can provide an on site clipping service or can supply all of the tools and clips you would need to do it yourself.

Providing pre-clipped belts allows the belt to be quickly and easily fitted on site by the customer minimising production down time. Available in stainless steel or copper alloy for ferrous metal detectors.

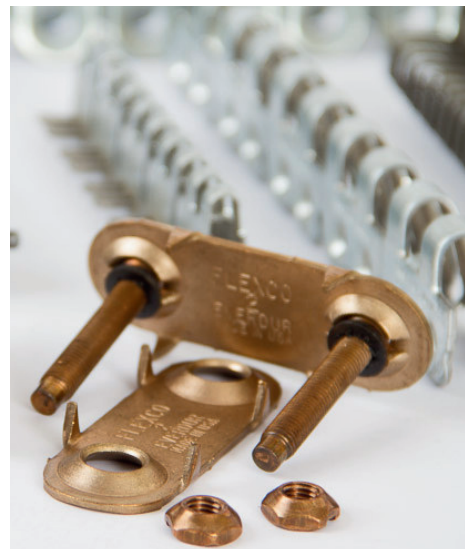
For a full extensive range of Flexco products and information sheets, please scan the QR Code above or contact us for the latest stock and pricing information.



190 BELT FASTENERS



2C BELT FASTENERS



NO.2 COPPER ALLOY



1 1/2" BELT FASTENERS



HINGE PIN CLIPS



PUNCH & TIGHTENER

RUBBER PRODUCTS

Rubber lining has become a large part of our business. We offer a full range of wear resistant rubbers from 35 to 90 shore complete with bonding layer or a plied finish. We can also offer from our extensive stock, sandwich scraper rubber and skirt rubber cut to width in 60 shore or a softer 50 shore.



SKIRT RUBBER

QPI hold vast stocks of both 60/65 shore and 40/45 shore SBR grade skirting rubber in various widths up to 300mm wide in 10m and 20m rolls in 6, 10 and 15mm thick.

STEEL BACKED RUBBER

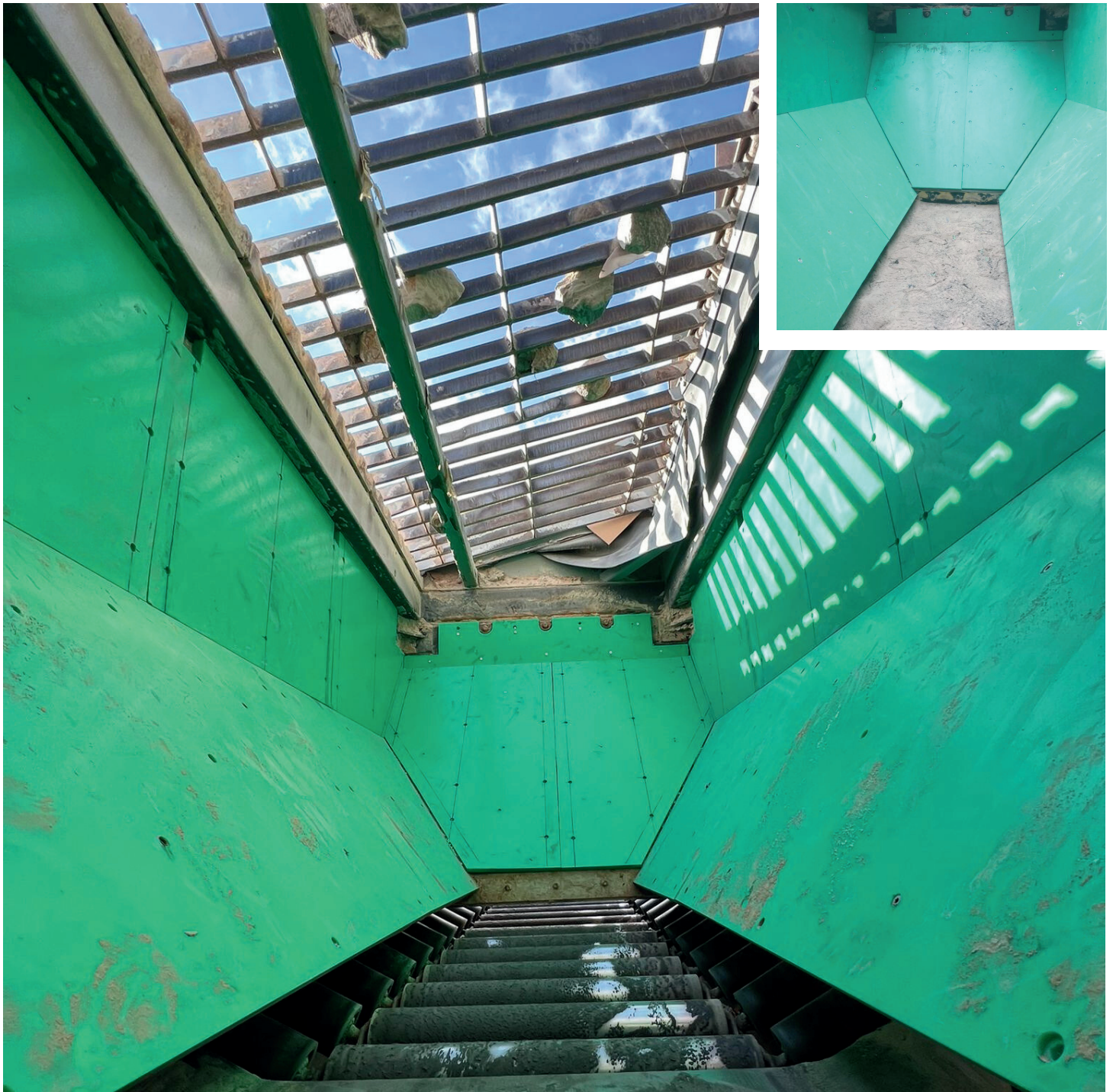
We stock many profiles and extrusions including screen capping rubber, weighbridge rubber and encapsulation grip strip.

Our best selling products are steel back rubber sheets and tiles. Sheets are stocked in various thickness from 15mm on 3mm steel to 75mm on 5mm of steel. Standard sheet sizes are 1500mm x 3000mm.

Modular Tiles are available in 300mm x 300mm from 15mm on 3mm increasing in 5mm increments up to 75mm C/W fixing hole. (Other sizes available on request)

Please contact us for the latest stock and pricing information.



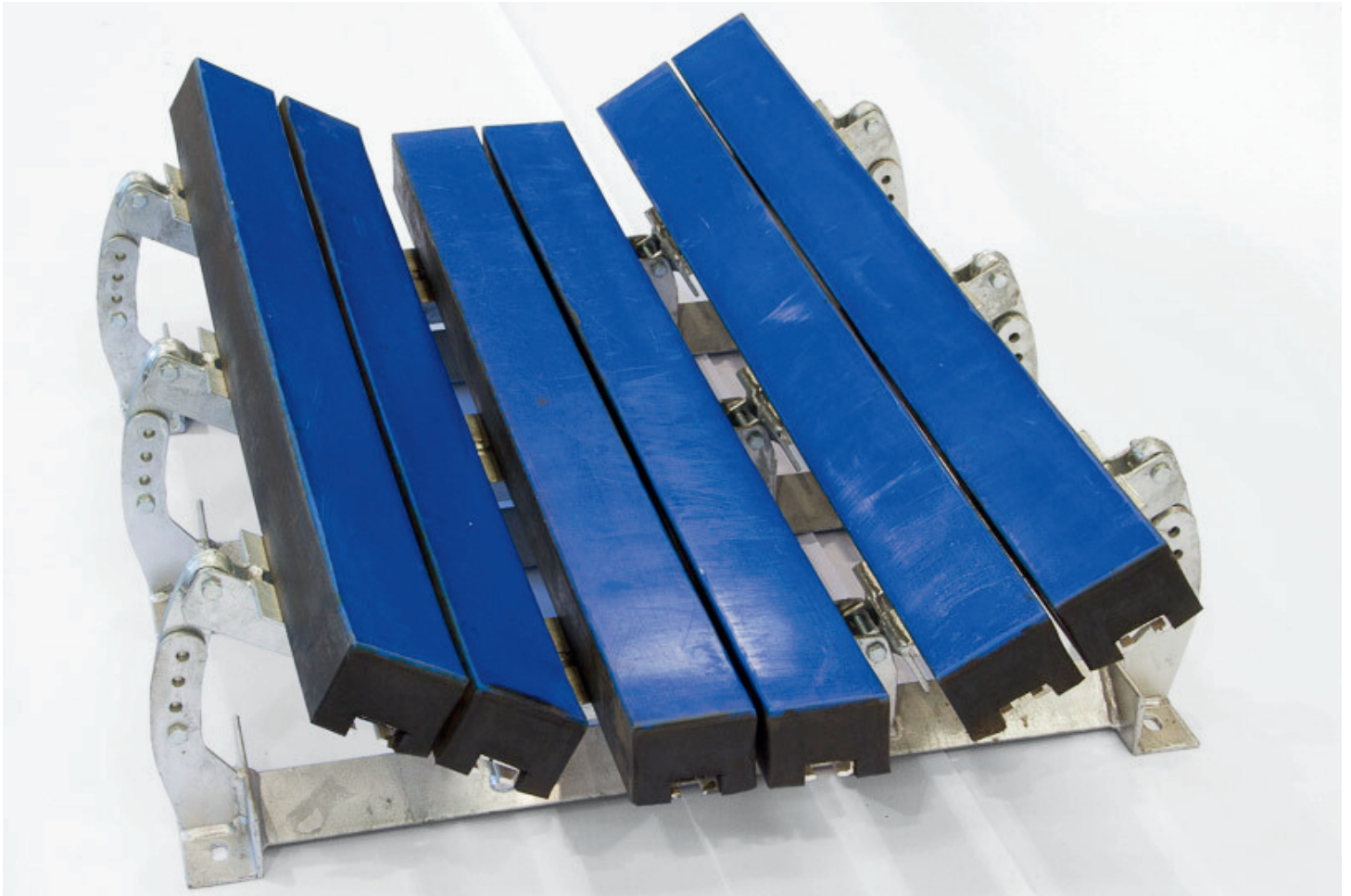


CHUTE LINING

Our polyethylene sheeting undergoes a precision pressing and planning process, resulting in an incredibly low coefficient of friction. This unique feature prevents build-up and blockages in hoppers and chutes, optimising operational productivity.

Available from stock options in 6 mm, 10 mm, 12 mm, and 15 mm thicknesses. Custom thicknesses of up to 100 mm are available upon request. We also provide a full on site fitting service.

Please get in touch for more information.



IMPACT BEDS

QPI's Impact Beds are an independent frame design that can be spaced according to conveyor requirements and are galvanised to 140 microns. They are adjustable from 20 to 45 degrees in 5 degree increments. Sets can be fitted with 50mm or 75mm thick bars, replacing a standard 3 roller transoms set.

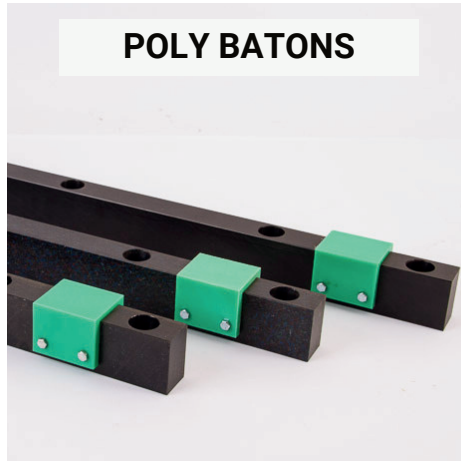
QPI's impact beds provide a better skirt seal than rollers and have easy bar replacement via the drop-down wing design. If required the centre bars can be replaced using an impact roller, doing so can reduce drag. Each impact bar has a low friction UHMW top (pictured) giving excellent wear life.

Ex-stock in standard belt widths. **Please get in touch for more information.**

OTHER PRODUCTS

We offer a wide range of products covering most needs in a range of varied industries including: Aggregate, Recycling, Brick & Tile Manufacturing, Bagging and more.

Please get in touch for more information, pricing and quotations.



CONTACT INFORMATION



GENERAL

info@qpiltd.co.uk
01530 265 900



SALES

sales@qpiltd.co.uk
01530 265 900



ACCOUNTS

accounts@qpiltd.co.uk
01530 265 900



OPPORTUNITIES

info@qpiltd.co.uk
01530 265 900



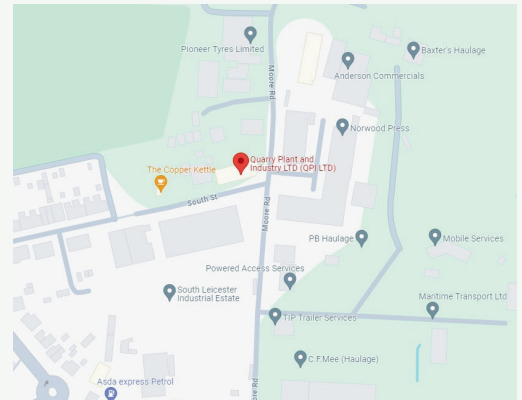
MARKETING

platforms@qpiltd.co.uk
@quarryplantandindustryLtd

LOCATIONS

For our Head Office and
Ellistown Unit:

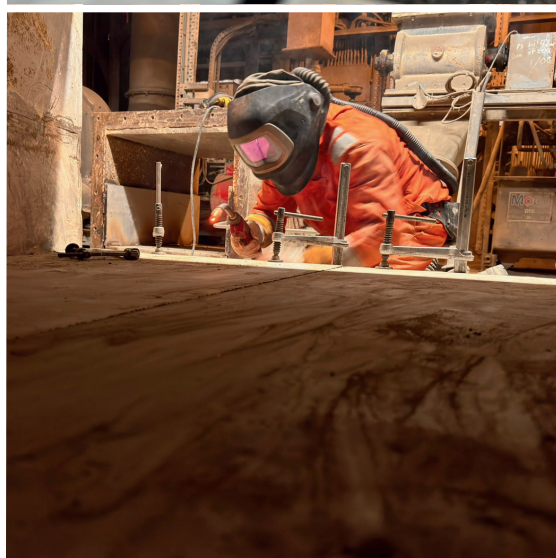
QPI Ltd, Unit 14 Moore Road,
South Leicester Industrial
Estate. Ellistown, Leicestershire.
LE67 1EU



For Deliveries to our
Heather Works:

QPI Ltd, Heather Works,
Mill Lane, Heather,
Leicestershire. LE67 2QE







T: 01530 265 900
E: sales@qipild.co.uk
W: www.qpild.co.uk



[@quarryplantandindustry](https://www.instagram.com/quarryplantandindustry)